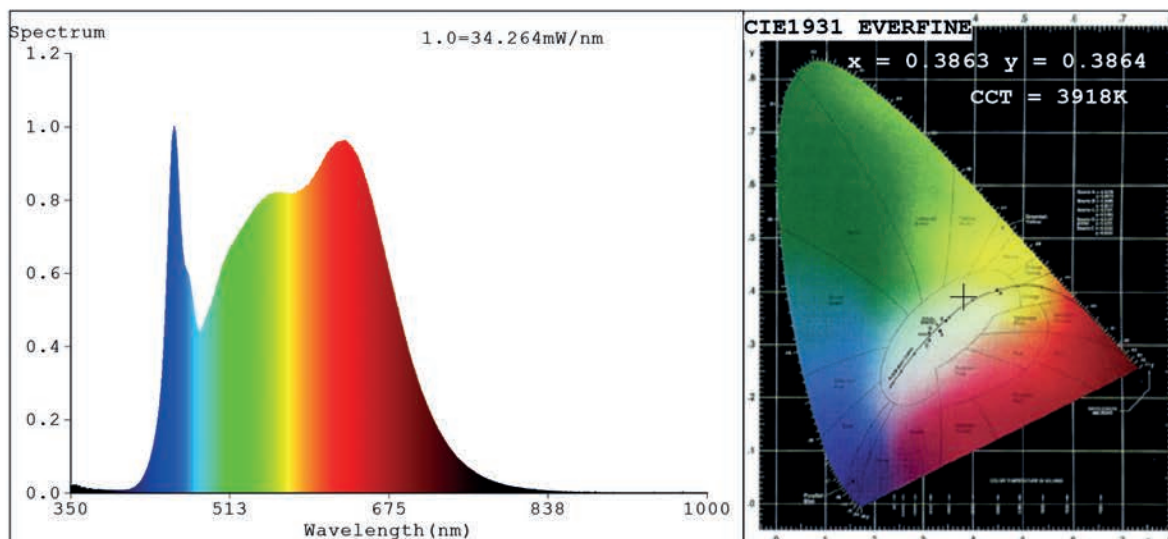


## Spectrum Test Report



### Color Parameters:

Chromaticity Coordinate:  $x=0.3863$   $y=0.3864$   $u'=0.2251$   $v'=0.5066$   
 CCT=3918K(Duv=0.0028) Dominant WL:Ld =578.0nm Purity=31.9%  
 Ratio:R=20.4% G=75.2% B=4.5%; Peak WL:Lp=455.7nm FWHM=28.9nm  
 Render Index:Ra=96.0 CRI=93.9 TM30:Rf=91 Rg=98  
 R1 =97 R2 =99 R3 =98 R4 =94 R5 =95 R6 =96 R7 =95  
 R8 =93 R9 =87 R10=95 R11=96 R12=73 R13=98 R14=98 R15=95

### Photo Parameters:

Flux = 1964 lm Eff. : 93.33 lm/W Fe = 6.951 W

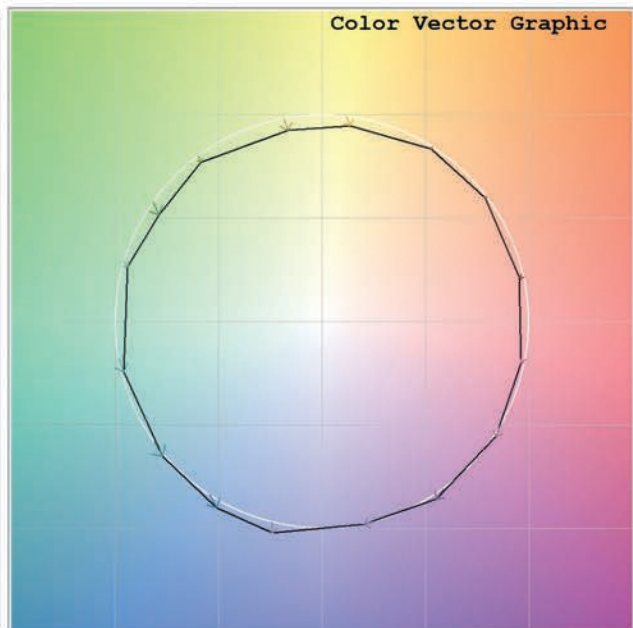
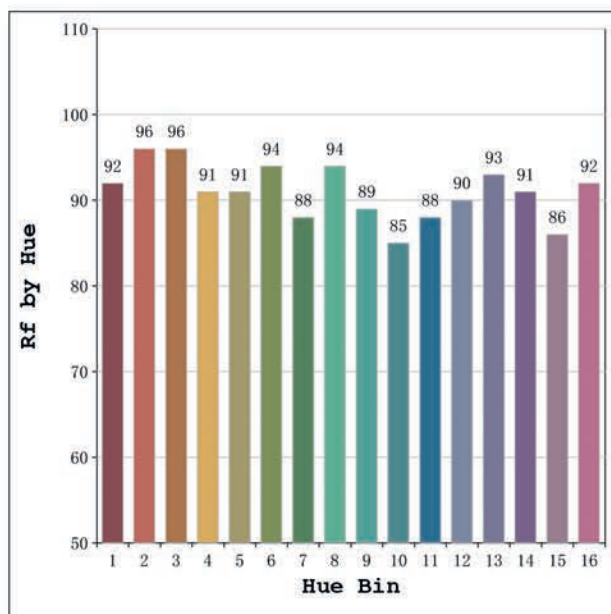
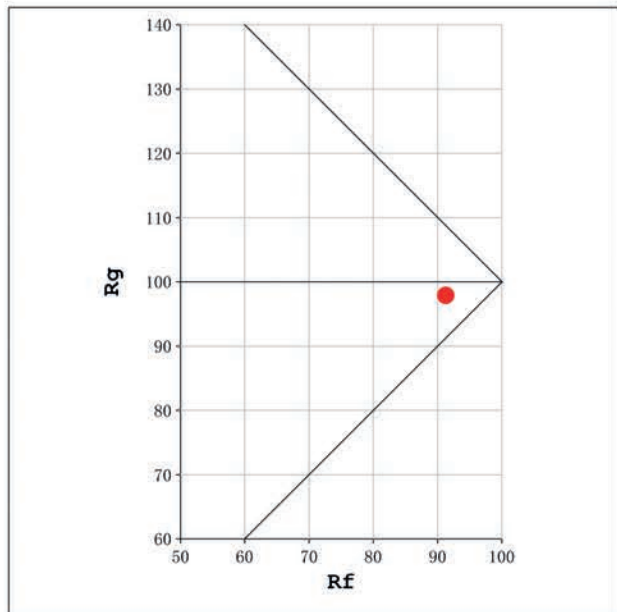
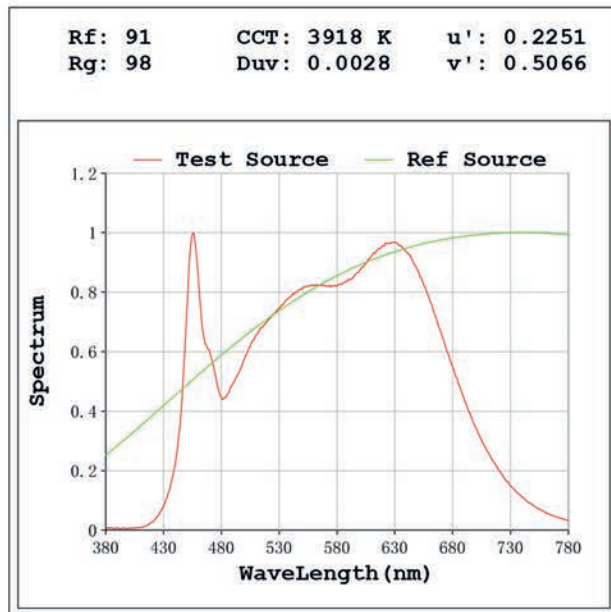
### Electrical parameters:

V = 23.998 V I = 0.8770 A P = 21.05 W PF = 1.000

Status: Integral T = 784 ms Ip = 43666 (67%)

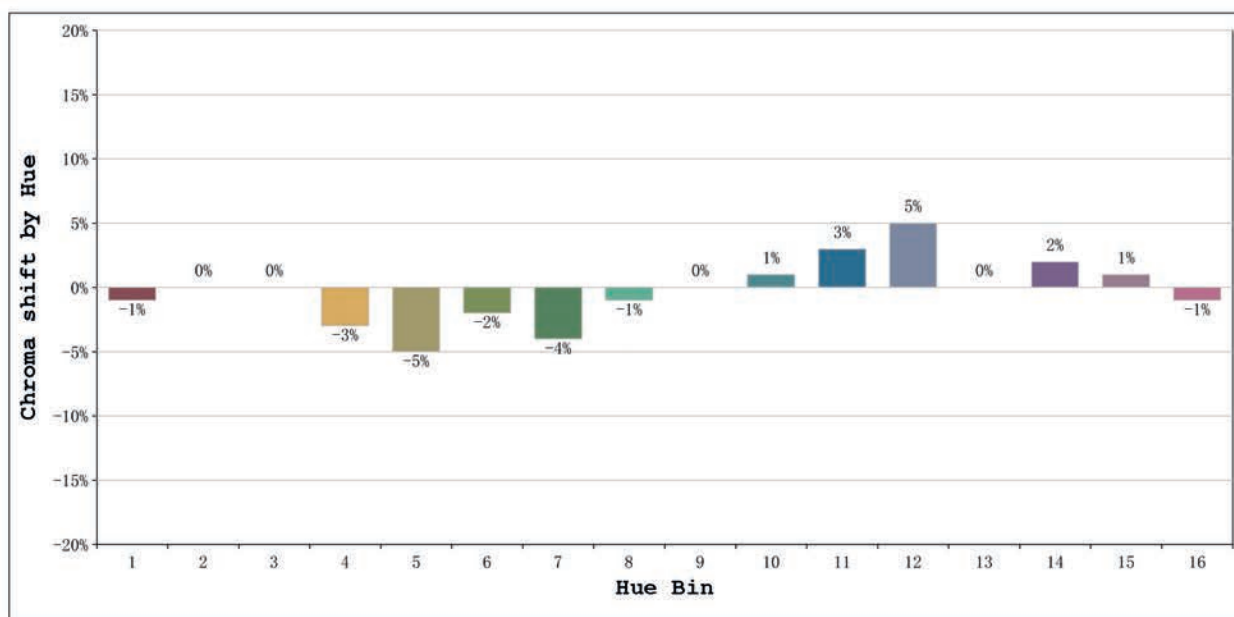
Model:Ecoled Boxled 10° 4000K  
 Tester:Sergio Carneros  
 Temperature:27Deg  
 Manufacturer:Luz Negra

Number:31.184  
 Date:2024-12-18 09:28:40  
 Humidity:35%  
 Remarks:tira de 106.5cm



Model:Ecoled Boxled 10° 4000K  
 Tester:Sergio Carneros  
 Temperature:27Deg  
 Manufacturer:Luz Negra

Number:31.184  
 Date:2024-12-18 09:28:40  
 Humidity:35%  
 Remarks:tira de 106.5cm



			Graphic shift(%)	
Hue Bin	Hue Angle	Rf	Chroma	Hue
1	0.0° - 22.5°	92	-1	1
2	22.5° - 45.0°	96	0	0
3	45.0° - 67.5°	96	0	0
4	67.5° - 90.0°	91	-3	-2
5	90.0° - 112.5°	91	-5	0
6	112.5° - 135.0°	94	-2	1
7	135.0° - 157.5°	88	-4	4
8	157.5° - 180.0°	94	-1	3
9	180.0° - 202.5°	89	0	7
10	202.5° - 225.0°	85	1	8
11	225.0° - 247.5°	88	3	7
12	247.5° - 270.0°	90	5	1
13	270.0° - 292.5°	93	0	-4
14	292.5° - 315.0°	91	2	-4
15	315.0° - 337.5°	86	1	-4
16	337.5° - 360.0°	92	-1	-1

Model:Ecoled Boxled 10° 4000K  
 Tester:Sergio Carneros  
 Temperature:27Deg  
 Manufacturer:Luz Negra

Number:31.184  
 Date:2024-12-18 09:28:40  
 Humidity:35%  
 Remarks:tira de 106.5cm